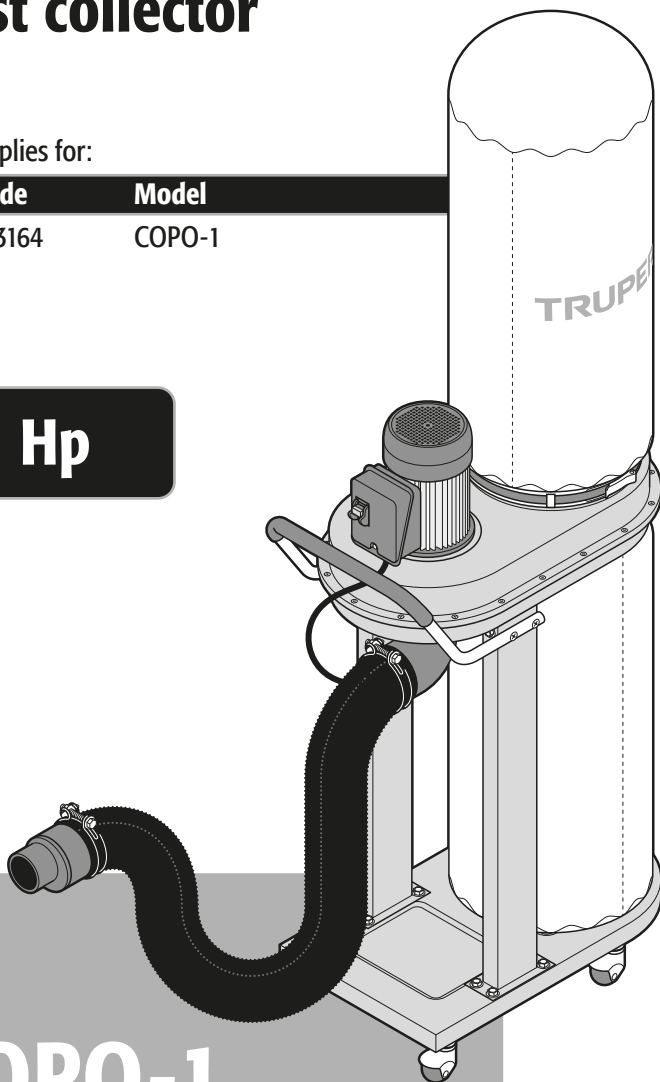


## Manual Dust collector

Applies for:

| Code   | Model  |
|--------|--------|
| 103164 | COPO-1 |

**1 Hp**



# COPO-1



Read this manual thoroughly  
before using the tool.



Technical data ..... 3

Power requirements ..... 3

! General safety warnings for electrical tools ..... 4

! Safety warnings for the use of a dust collector ..... 5

List of parts ..... 6

Assembly ..... 7

Parts ..... 10

Startup ..... 11

Maintenance ..... 11

Troubleshooting ..... 12

Authorized Service Center ..... 13

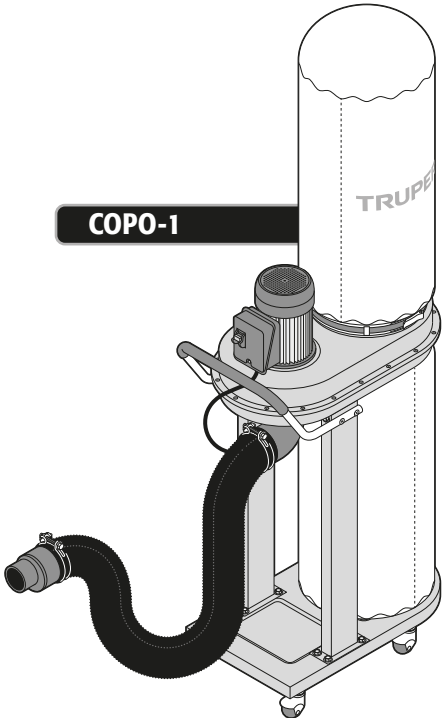
Warranty policy ..... 14

**! CAUTION**

To gain the best performance of the tool, prolong the duty life, make the Warranty valid if necessary, and to avoid hazards of fatal injuries please read and understand this Manual before using the tool.

Keep this manual for future references.

The illustrations in this manual are for reference only. They might be different from the real tool.



## COP0-1

|                       |                 |  |       |
|-----------------------|-----------------|--|-------|
| Code •                |                 | 103164   |       |
| Description •         |                 | Dust collector   |       |
| Voltage •             | 127 V~          | Frequency •  | 60 Hz |
| Power •               | 1 Hp (750 W)    | Current •  | 11 A  |
| Bag capacity •        | 15 gal          | Inlet port •   | 4"    |
| Air volume •          |                 | 600 CFM (1 020 m³/h)                                       |       |
| Collects up to •      |                 | 2 microns  |       |
| Maximum motor speed • |                 | 3 450 RPM  |       |
| Dimensions •          | 5.6 ft X 2.3 ft | Weight •   | 75 lb |
| Noise level •         |                 | 95 dB  |       |
| Duty cycle •          |                 | 120 minutes work x 30 minutes rest. Daily maximum 6 hours. |       |
| Conductors •          |                 | 16 AWG x3C with insulation temperature of 221 °F           |       |
| Insulation •          | Class I         | IP Grade •   | IP20  |

The power cord has a Y-type cable restraint.  
The construction class of the tool is: Basic insulation.  
The thermal insulation class of the motor windings: Class B.

**⚠ WARNING** Avoid the risk of electric shock or severe injury. When the power cable gets damaged it should only be replaced by the manufacturer or at a TRUPER Authorized Service Center. The build quality of the electric insulation is altered if spills or liquid gets into the tool while in use. Do not expose to rain, liquids and/or dampness.

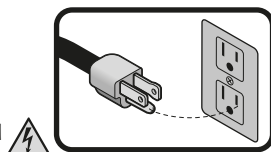
**⚠ WARNING** Before gaining access to the terminals all power sources should be disconnected.



## Power requirements

**⚠ WARNING** In case of failures or breakdowns, the grounded connection provides a pathway with minimum resistance for electrical current, which reduces the risk of electrical shock. This tool is equipped with an electrical cord that features a grounded conductor and plug. The plug must be connected to an outlet that is installed and grounded according to all local codes.

**⚠ WARNING** When using an extension cord, make sure to use the proper gauge to carry the current your tool will consume. An undersized cord will cause voltage drops in the line, resulting in power loss and motor overheating. The following table shows the correct size to be used depending on the cord length and the amperage capacity indicated on the tool's data plate. If in doubt, use the next higher gauge.



| Ampere Capacity          | Number of Conductors | Extension Gauge    |                   |
|--------------------------|----------------------|--------------------|-------------------|
|                          |                      | From 6 ft to 49 ft | Higher than 49 ft |
| From 0 A and up to 10 A  | 3 (one grounded)     | 18 AWG             | 16 AWG            |
| From 10 A and up to 13 A |                      | 16 AWG             | 14 AWG            |
| From 13 A and up to 15 A |                      | 14 AWG             | 12 AWG            |
| From 15 A and up to 20 A |                      | 8 AWG              | 6 AWG             |

\* It is allowed to use it if the extensions themselves have an overcurrent protection device.

AWG = American Wire Gauge. Reference: NMXJ-195-ANCE

**⚠ WARNING** When using power tools outdoors use a **3 VOLTECK** grounded extension cable labeled "Outdoors Use". These extension cables are specially manufactured for outdoors use and reduce the risk of electric shock.





## General safety warnings for electrical tools



**⚠ WARNING! Read carefully all safety warnings and instructions listed below.** Failure to comply with any of these warnings may result in electric shock, fire and / or severe damage. **Save all warnings and instructions for future references.**

### Work area

**Keep your work area clean, and well lit.**

Cluttered and dark areas may cause accidents.



**Never use the tool in explosive atmospheres, such as in the presence of flammable liquids, gases or dust.**

Sparks generated by power tools may ignite the flammable material.



**Keep children and bystanders at a safe distance while operating the tool.**

Distractions may cause losing control.



### Electrical Safety

**The tool plug must match the power outlet. Never modify the plug in any way. Do not use any adapter plugs with grounded power tools.**

Mismatched plugs and different power outlets increase the risk of electric shock.



**Avoid body contact with grounded surfaces, such as pipes, radiators, electric ranges and refrigerators.**

The risk of electric shock increases if your body is grounded.

**Do not expose the tool to rain or wet conditions.**

Water entering into the tool increases the risk of electric shock.

**Do not force the cord. Never use the cord to carry, lift or unplug the tool. Keep the cord away from heat, oil, sharp edges or moving parts.**

Damaged or entangled cords increase the risk of electric shock.

**When operating a tool outdoors, use an extension cord suitable for outdoor use.**

Using an adequate outdoor extension cord reduces the risk of electric shock.

**If operating the tool in a damp location cannot be avoided, use a ground fault circuit interrupter (GFCI) protected supply.**

Using a GFCI reduces the risk of electric shock.

### Personal safety

**Stay alert, watch what you are doing and use common sense when operating a tool. Do not use a power tool while you are tired or under the influence of drugs, alcohol or medication.**

A moment of distraction while operating the tool may result in personal injury.

**Use personal protective equipment. Always wear eye protection.**

Protective equipment such as safety glasses, anti-dust mask, non-skid shoes, hard hats and hearing protection used in the right conditions significantly reduce personal injury.



**Prevent unintentional starting up. Ensure the switch is in the "OFF" position before connecting into the power source and / or battery as well as when carrying the tool.**

Transporting power tools with the finger on the switch or connecting power tools with the switch in the "ON" position may cause accidents.

**Remove any wrench or vice before turning the power tool on.**

Wrenches or vices left attached to rotating parts of the tool may result in personal injury.

**Do not overreach. Keep proper footing and balance at all times.**

This enables a better control on the tool during unexpected situations.

**Dress properly. Do not wear loose clothing or jewelry. Keep hair, clothes and gloves away from the moving parts.**

Loose clothes, jewelry or long hair may get caught in moving parts.



**If you have dust extraction and recollection devices connected onto the tool, inspect their connections and use them correctly.**

Using these devices reduce dust-related risks.

### Power Tools Use and Care

**Do not force the tool. Use the adequate tool for your application.**

The correct tool delivers a better and safer job at the rate for which it was designed.



**Do not use the tool if the switch is not working properly.**

Any power tool that cannot be turned ON or OFF is dangerous and should be repaired before operating.

**Disconnect the tool from the power source and / or battery before making any adjustments, changing accessories or storing.**

These measures reduce the risk of accidentally starting the tool.

**Store tools out of the reach of children. Do not allow persons that are not familiar with the tool or its instructions to operate the tool.**

Power tools are dangerous in the hands of untrained users.



**Service the tool. Check the mobile parts are not misaligned or stuck. There should not be broken parts or other conditions that may affect its operation. Repair any damage before using the tool.**

Most accidents are caused due to poor maintenance to the tools.



**Keep the cutting accessories sharp and clean.**

Cutting accessories in good working conditions are less likely to bind and are easier to control.

**Use the tool, components and accessories in accordance with these instructions and the projected way to use it for the type of tool when in adequate working conditions.**

Using the tool for applications different from those it was designed for, could result in a hazardous situation.

### Service

**Repair the tool in a TRUPER Authorized Service Center using only identical spare parts.**

This will ensure that the safety of the power tool is maintained.

**Children or people with reduced physical, sensory or mental capabilities shall not operate the tool, neither inexperienced people or without knowledge in the use of the tool, unless supervised by a person responsible of their safety or if receiving previous instructions about the tool operation.**

Children shall be kept under supervision to double-check they will not play with the tool. Tight supervision shall be used with children or disabled persons to prevent from using or being close to any household tool.



This tool is in compliance with the Official Mexican Standard (NOM - Norma Oficial Mexicana).

# Safety warnings for the use of a dust collector

# TRUPER

## Hazardous materials

**⚠ WARNING** • Do not vacuum or use the equipment near flammable liquids, gases, or explosive vapors such as gasoline or other fuels, lighter fluid, hot liquids, cleaners, oil-based paints, natural gas, hydrogen, or explosive powders such as coal dust, magnesium dust, grain dust, or gunpowder. Sparks inside the motor can ignite flammable vapors or dust.

**⚠ WARNING** • Do not vacuum anything that is burning or producing smoke, such as cigarettes, matches, or hot ashes.

**⚠ CAUTION** • To reduce the risk of health damage, do not vacuum toxic materials.

- Do not vacuum masonry dust or chimney soot, as it is a very fine dust that will not be trapped by the filter, which can damage the motor.
- This product is designed for exclusive use with wood-working waste.

## Precautions with dust and residues

**⚠ CAUTION** • Use professional TRUPER respirators and cartridges marked suitable for dust and paint vapor work. Ordinary paint masks do not provide this protection.



**⚠ WARNING** • Children and pregnant women should not enter the work area.

## While operating the equipment

**⚠ CAUTION** • Keep away from openings and moving parts: hair, loose clothing, fingers, and any other body parts.

- Do not use or store near hazardous materials.
- Do not leave the equipment running unattended.
- Do not leave the equipment unattended when plugged into the power source.
- Do not place any objects on the equipment.
- Do not operate the equipment with blocked ventilation openings; keep them free from dust, lint, hair, or anything that may restrict airflow.
- Do not use the equipment with broken or without bags.
- If the equipment is not working properly, missing parts, or damaged, take it to a TRUPER Authorized Service Center.
- Turn off the equipment before unplugging it.
- Unplug it from the outlet when not in use or before servicing.
- Do not allow it to be used as a toy. Special attention should be given when used by children or when they are nearby.
- Do not expose the equipment to rain. Store indoors.
- Use ear protection when performing services that produce noise levels exceeding 85 dB.

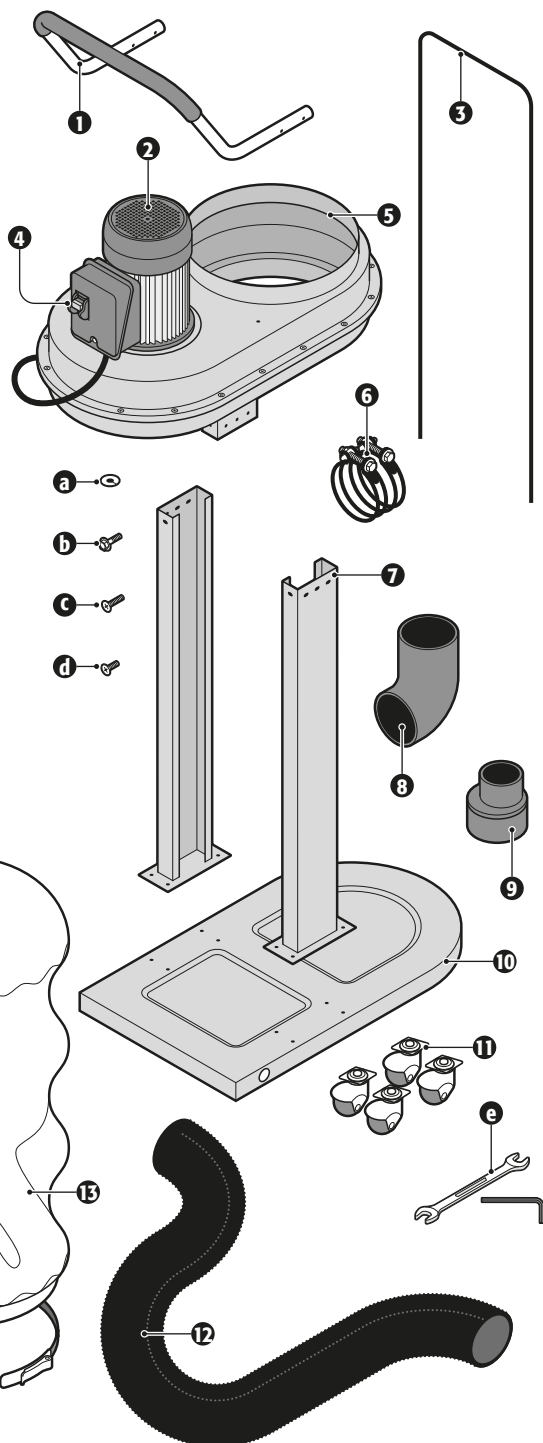


- Unpack the equipment and check for any damage during transportation.
- Clearly identify the individual parts as shown in the parts list.

1. Handle.
2. Motor.
3. Hanger.
4. Keyed switch.
5. Vacuum hood.
6. Clamp (2).
7. Bracket (2).
8. Connector.
9. 4" to 2-1/4" adapter.
10. Base.
11. Wheels (4).
12. 4" x 60" hose.
13. Upper bag (filter).
14. Bag clamp (2).
15. Lower bag (collector).

Fasteners for component assembly:

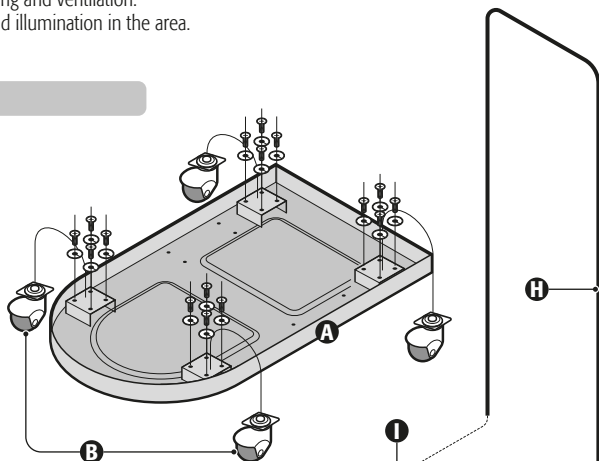
- a. 5mm lock washers (16).
- b. Hex head screws with washer (12).
- c. M8 X 32mm flat head screws (4).
- d. M5 X 12mm phillips head screws (17).
- e. Hex key and open-end wrench.



- Assemble the equipment in the location where it will be operated, on a well-leveled floor capable of supporting its weight. The space should have good lighting and ventilation.
- There should be adequate ventilation and illumination in the area.

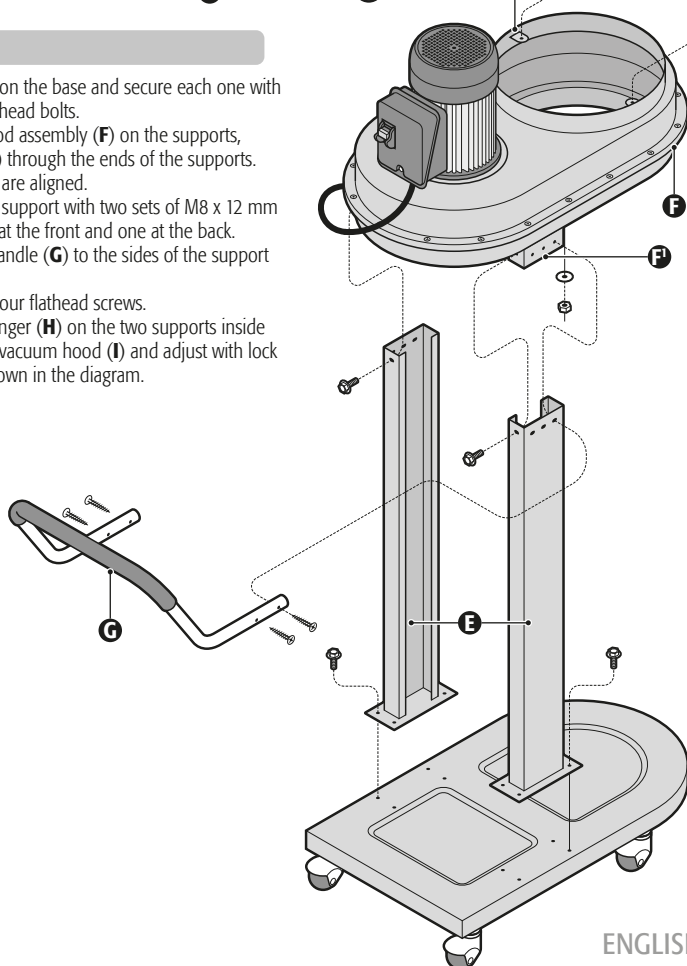
## Wheel assembly

- Place the base (A) upside down.
- Mount the four wheels (B) on their respective support pieces.
- Secure them with 4 sets of M5 Phillips head screws and lock washers for each wheel.
- Turn the base to position it with the wheels facing downward.



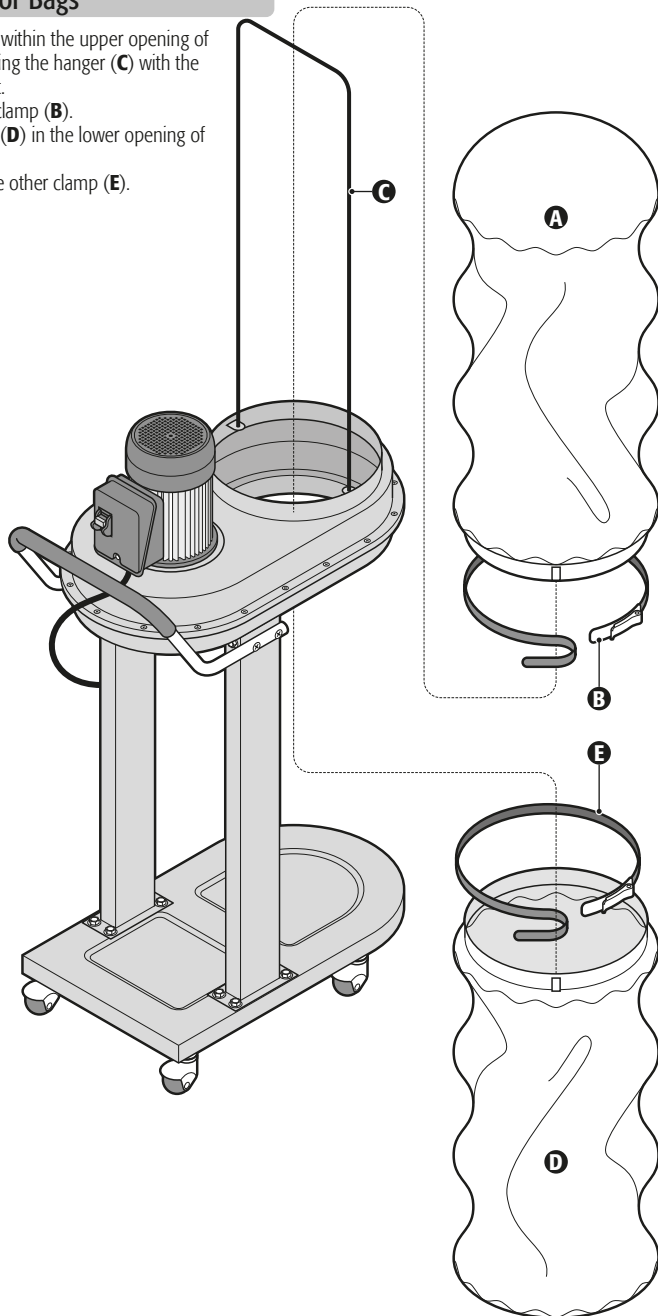
## Chassis assembly

- Place both supports (E) on the base and secure each one with four M8 x 12 mm washer head bolts.
- Position the vacuum hood assembly (F) on the supports, passing its assemblies (F') through the ends of the supports.
- Ensure that all the holes are aligned.
- Attach the hood to each support with two sets of M8 x 12 mm washer head screws, one at the front and one at the back.
- Attach the ends of the handle (G) to the sides of the support ends.
- Secure the handle with four flathead screws.
- Place the ends of the hanger (H) on the two supports inside the upper opening of the vacuum hood (I) and adjust with lock washer and hex nut as shown in the diagram.



## Filter and Collector Bags

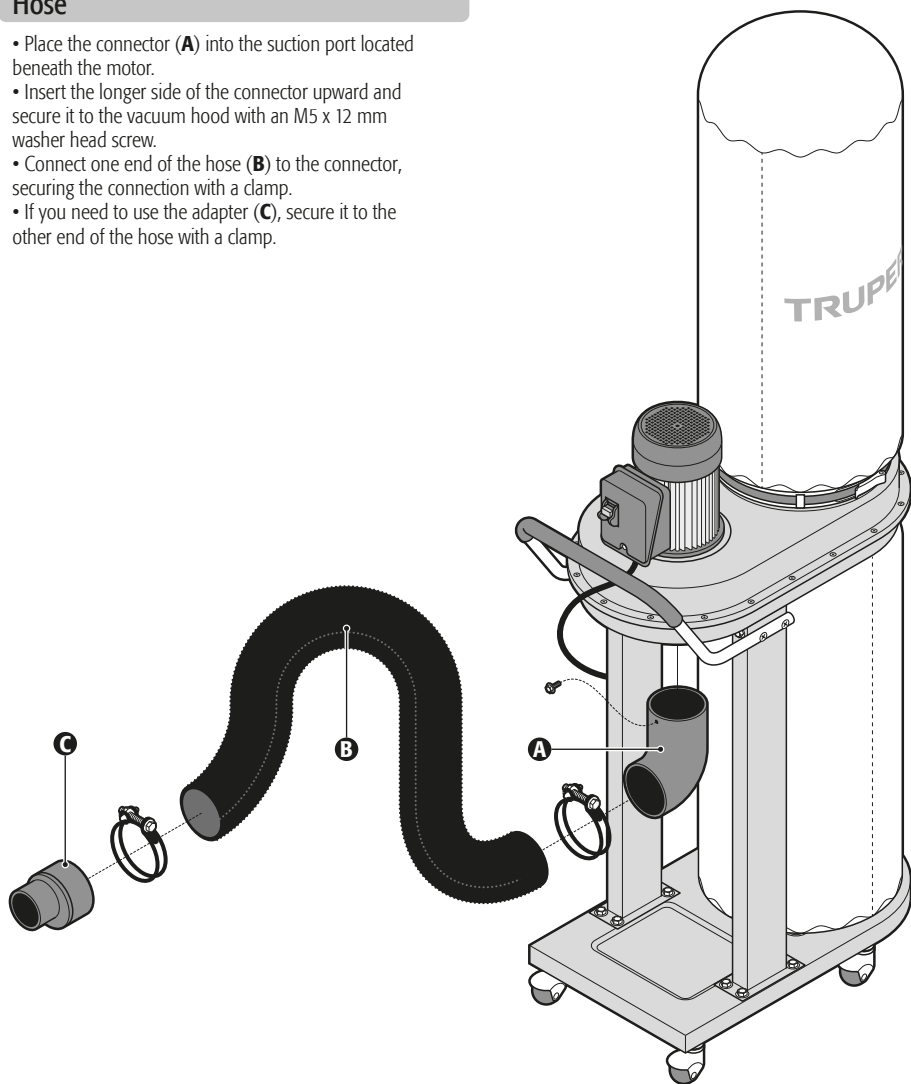
- Place the filter bag (A) within the upper opening of the vacuum hood, covering the hanger (C) with the bag to provide it support.
- Secure the bag with a clamp (B).
- Place the collector bag (D) in the lower opening of the vacuum hood.
- Secure the bag with the other clamp (E).

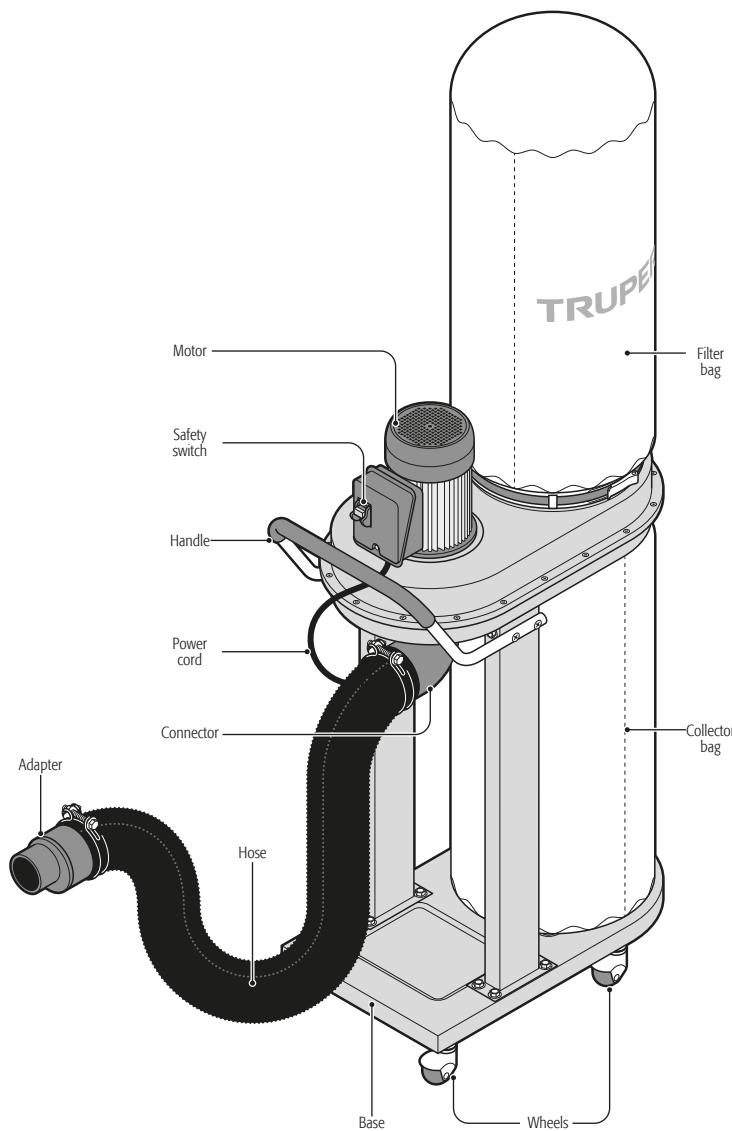




## Hose

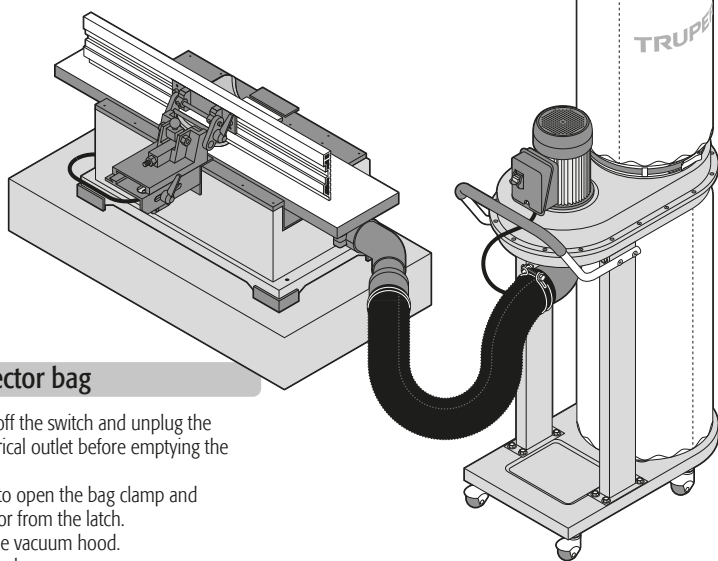
- Place the connector **(A)** into the suction port located beneath the motor.
- Insert the longer side of the connector upward and secure it to the vacuum hood with an M5 x 12 mm washer head screw.
- Connect one end of the hose **(B)** to the connector, securing the connection with a clamp.
- If you need to use the adapter **(C)**, secure it to the other end of the hose with a clamp.





## Operation

- Position the dust collection on a flat, level surface next to the dust-producing machine.
- Connect the collector hose to the dust-producing machine using a hose clamp. Use a 4" to 2 1/4" adapter if necessary.
- Before operating the dust-producing machine, switch on the dust collector.



## Emptying the collector bag

**⚠ WARNING** • Turn off the switch and unplug the power cord from the electrical outlet before emptying the collector bag.

- Move the lever outward to open the bag clamp and release the elastic connector from the latch.
- Separate the bag from the vacuum hood.
- Dispose of the dust properly.
- To place the empty collector bag on the vacuum hood, mount the collector bag around the lower opening of the hood. Then, insert the elastic connector into one of the latch slots and push the clamp lever inward.
- Ensure that the bag is securely in place before turning on the equipment again.

## Maintenance

- Clean dust, chips, and other particles from the motor. If the operation is very dusty or dirty, the motor needs frequent inspection.
- Vacuum all particles that may have entered the motor.
- Replace the power cord if it is worn, cut, or damaged.
- Replace the collector hose if it is worn or damaged.
- Replace the collector and filter bags if they are worn or damaged.
- Clean the wheels as needed to ensure proper operation.
- Regularly check that all nuts, bolts, screws, etc., have not loosened due to the vibration of the collector.

| Problem  | Cause   | Solution   |
|--|---|--|
| The motor doesn't work.  | <ol style="list-style-type: none"><li>1. Defective plug, cord, switch, or motor.</li><li>2. Burnt fuse or circuit breaker.</li></ol>  | <ol style="list-style-type: none"><li>1. Check the wiring, replace the faulty parts.</li><li>2. Check the fuse or switch, replace them if necessary.</li></ol>   |
| Excessive dust in the air.                                     | <ol style="list-style-type: none"><li>1. Hose connection or leaking bag.</li><li>2. The filter bag or collector leaks.</li></ol>  | <ol style="list-style-type: none"><li>1. Check the connections of the collector bag and the filter. Check the connections of the connector hose.</li><li>2. Dust is trapped under the bag clamp or the collector bag, preventing proper sealing.</li></ol>               |
| Excessive noise in the vacuum hood.                            | <ol style="list-style-type: none"><li>1. There is debris or a large piece of wood in the vacuum hood.</li><li>2. Loose internal impeller.</li></ol>   | <ol style="list-style-type: none"><li>1. Do not vacuum metal materials. Turn off the collector and allow the waste to settle the collector bag.</li><li>2. Disconnect the collector from the power source. Remove the collector hose and tighten the impeller.</li></ol> |
| Excessive motor noise.   | Defective motor.  | Have a technician inspect the motor.   |
| The motor does not reach its maximum power or stops.           | <ol style="list-style-type: none"><li>1. The voltage going to the collector is low due to circuit overload.</li><li>2. The voltage going to the collector is low due to very small extension cords.</li><li>3. Low voltage from the power source.</li></ol> | <ol style="list-style-type: none"><li>1. Remove other machines or electrical devices from the circuit.</li><li>2. Increase the wire gauge size of the extension cords or shorten them.</li><li>3. Request a voltage review from the electric company.</li></ol>          |
| The motor starts very slowly or does not reach its full speed. | <ol style="list-style-type: none"><li>1. Burnt or defective motor.</li><li>2. Defective motor capacitor switch.</li></ol>   | <ol style="list-style-type: none"><li>1. Check the motor, replace it if necessary.</li><li>2. Check the switch and replace it if necessary.</li></ol>  |
| The motor overheats.   | <ol style="list-style-type: none"><li>1. Motor overload.</li><li>2. Inadequate motor cooling.</li></ol>   | <ol style="list-style-type: none"><li>1. Reduce the load by slowing down the dust production.</li><li>2. Clean wood dust from the motor, ensure that the ventilation slots are clear.</li></ol>  |
| Circuit breakers or fuses tripping.                            | <ol style="list-style-type: none"><li>1. Motor overload.</li><li>2. Inadequate capacity of circuit breakers or fuses.</li></ol>   | <ol style="list-style-type: none"><li>1. Reduce the load by slowing down dust production.</li><li>2. Use circuit breakers or fuses with the appropriate capacity.</li></ol>  |

If problems persist despite performing the recommended corrective actions, contact a TRUPER Authorized Service Center.

In the event of any problem contacting a TRUPER Authorized Service Center, please see our webpage [WWW.TRUPER.COM](http://WWW.TRUPER.COM) to get an updated list, or call our toll-free numbers 800 690-6990 or 800-018-7873 to get information about the nearest Service Center.

**AGUASCALIENTES** **DE TODO PARA LA CONSTRUCCIÓN**  
GRAL. BARRAGÁN #1201, COL. GREMIAL, C.P. 20030,  
AGUASCALIENTES, AGS. TEL.: 449 994 0537

**BAJA CALIFORNIA** **SUCURSAL TIJUANA**  
AV. LA ENCANTADA, LOTE #5, PARQUE INDUSTRIAL EL  
FLORIDO II, C.P. 2244, TIJUANA, B.C.  
TEL.: 664 969 5100

**BAJA CALIFORNIA SUR** **FIX FERRETERÍAS**  
FELIPE ÁNGELES ESQ. RUIZ CORTÍNEZ S/N, COL. PUEBLO  
NUEVO, C.P. 23670, CD. CONSTITUCIÓN, B.C.S.  
TEL.: 613 132 1115

**CAMPECHE** **TORNILLERÍA Y FERRETERÍA AAA**  
AV. ÁLVARO OBREGÓN #324, COL. ESPERANZA  
C.P. 24080 CAMPECHE, CAMP. TEL.: 981 815 2808

**CHIAPAS** **FIX FERRETERÍAS**  
AV. CENTRAL SUR #27, COL. CENTRO, C.P. 30700,  
TAPACHULA, CHIS. TEL.: 962 118 4083

**CHIHUAHUA** **SUCURSAL CHIHUAHUA**  
AV. SILVESTRE TERRAZAS #128-11, PARQUE INDUSTRIAL  
BAFAR, CARRETERA MÉXICO CUAUHTÉMOC, C.P. 31415,  
CHIHUAHUA, CHIH. TEL.: 614 434 0052

**MEXICO CITY** **FIX FERRETERÍAS**  
EL MONSTRUO DE CORREGIDORA, CORREGIDORA # 35,  
COL. CENTRO, C.P. 06060, CUAUHTÉMOC, CDMX.  
TEL.: 55 5522 5031 / 5522 4861

**COAHUILA** **SUCURSAL TORREÓN**  
CALLE METAL MECÁNICA #280, PARQUE INDUSTRIAL  
ORIENTE, C.P. 27278, TORREÓN, COAH.  
TEL.: 871 209 68 23

**COLIMA** **BOMBAS Y MOTORES BYMTESA DE MANZANILLO**  
BLVD. MIGUEL DE LA MADRID #190, COL. 16 DE  
SEPTIEMBRE, C.P. 28239, MANZANILLO, COL.  
TEL.: 314 332 1986 / 332 8013

**DURANGO** **TORNILLOS ÁGUILA, S.A. DE C.V.**  
MAZURIO #200, COL. LUIS ECHEVERRÍA, DURANGO,  
DGO. TEL.: 618 817 1946 / 618 818 2844

**ESTADO DE MÉXICO** **SUCURSAL CENTRO JILOTEPEC**  
PARQUE INDUSTRIAL # 1, COL. PARQUE INDUSTRIAL  
JILOTEPEC, JILOTEPEC, EDO. DE MÉX. C.P. 54257  
TEL.: 761 782 9101 EXT. 5728 Y 5102

**GUANAJUATO** **CÍA. FERRETERA NUEVO MUNDO S.A. DE C.V.**  
AV. MÉXICO - JAPÓN #225, CD. INDUSTRIAL, C.P. 38010,  
CELAYA, GTO. TEL.: 461 617 7578 / 79 / 80 / 88

**GUERRERO** **CENTRO DE SERVICIO ECLIPSE**  
CALLE PRINCIPAL MZ 1 LT. 1, COL. SANTA FE, C.P. 39010,  
CHILPANCIÑO, GRO. TEL.: 747 478 5793

**HIDALGO** **FERREPRECIOS S.A. DE C.V.**  
LIBERTAD ORIENTE #304 LOCAL 50, INTERIOR DE PASAJE  
ROBLEDO, COL. CENTRO, C.P. 43600, TULANCINGO,  
HGO. TEL.: 775 753 6615 / 775 753 6616

**JALISCO** **SUCURSAL GUADALAJARA**  
AV. ADOLFO B. HORN # 6800, COL: SANTA CRUZ DEL  
VALLE, C.P.: 45655, TLAJOMULCO DE ZUÑIGA, JAL.  
TEL.: 33 3606 5285 AL 90

**MICHOACÁN** **FIX FERRETERÍAS**  
AV. PASEO DE LA REPÚBLICA #3140-A, COL.  
EX-HACIENDA DE LA HUERTA, C.P. 58050, MORELIA,  
MICH. TEL.: 443 334 6858

**MORELOS** **FIX FERRETERÍAS**  
CAPITÁN ANZÚRES #95, ESQ. JOSÉ PERDIZ, COL.  
CENTRO, C.P. 62740, CUAUTLA, MOR.  
TEL.: 735 352 8931

**NAYARIT** **HERRAMIENTAS DE TEPIC**  
MAZATLAN #117, COL. CENTRO, C.P. 63000, TEPIC, NAY.  
TEL.: 311 258 0540

**NUEVO LEÓN** **SUCURSAL MONTERREY**  
CARRETERA LAREDO #300, 1B MONTERREY PARKS,  
COLONIA PUERTA DE ANAHUAC, C.P. 66052, ESCOBEDO,  
NUEVO LEÓN, TEL.: 81 8352 8791 / 81 8352 8790

**OAXACA** **FIX FERRETERÍAS**  
AV. 20 DE NOVIEMBRE #910, COL. CENTRO, C.P. 68300,  
TUXTEPEC, OAX. TEL.: 287 106 5092

**PUEBLA** **SUCURSAL PUEBLA**  
AV. PERIFÉRICO #2-A, SAN LORENZO ALMECATLA,  
C.P. 72710, CUAUHTLACINGO, PUE.  
TEL.: 222 282 8282 / 84 / 85 / 86

**QUERÉTARO** **ARU HERRAMIENTAS S.A. DE C.V.**  
AV. PUERTO DE VERACRUZ #110, COL. RANCHO DE  
ENMEDIO, C.P. 76842, SAN JUAN DEL RÍO, QRO.  
TEL.: 427 268 4544

**QUINTANA ROO** **FIX FERRETERÍAS**  
CARRETERA FEDERAL MZ. 46 LT. 3 LOCAL 2, COL. EJIDAL,  
C.P. 77710 PLAYA DEL CARMEN, Q.R.  
TEL.: 984 267 3140

**SAN LUIS POTOSÍ** **FIX FERRETERÍAS**  
AV. UNIVERSIDAD #1850, COL. EL PASEO, C.P. 78320,  
SAN LUIS POTOSÍ, S.L.P. TEL.: 444 822 4341

**SINALOA** **SUCURSAL CULIACÁN**  
AV. JESÚS KUMATE SUR #4301, COL. HACIENDA DE LA  
MORA, C.P. 80143, CULIACÁN, SIN.  
TEL.: 667 173 9139 / 173 8400

**SONORA** **FIX FERRETERÍAS**  
CALLE 5 DE FEBRERO #517, SUR LT. 25 MZ. 10, COL.  
CENTRO, C.P. 85000, CD. OBREGÓN, SON.  
TEL.: 644 413 2392

**TABASCO** **SUCURSAL VILLAHERMOSA**  
CALLE HELIO LOTES 1, 2 Y 3 MZ. #1, COL. INDUSTRIAL,  
2A ETAPA, C.P. 86010, VILLAHERMOSA, TAB.  
TEL.: 993 355 7244

**TAMAULIPAS** **VM ORINGS Y REFACCIONES**  
CALLE ROSITA #527 ENTRE 20 DE NOVIEMBRE Y GRAL.  
RODRÍGUEZ, FRACC. REYNOSA, C.P. 88780, REYNOSA,  
TAMS. TEL.: 899 926 7552

**TLAXCALA** **SERVICIOS Y HERRAMIENTAS INDUSTRIALES**  
PABLO SIDAR #132, COL. BARRIO DE SAN BARTOLOMÉ,  
C.P. 90970, SAN PABLO DEL MONTE, TLAX.  
TEL.: 222 271 7502

**VERACRUZ** **LA CASA DISTRIBUIDORA TRUPER**  
BLVD. PRIMAVERA ESQ. HORTENSIA S/N, COL.  
PRIMAVERA C.P. 93308, POZA RICA, VER.  
TEL.: 782 823 8100 / 826 8484

**YUCATÁN** **SUCURSAL MÉRIDA**  
CALLE 33 #600 Y 602, LOCALIDAD ITZINCAB Y Mulsay,  
MPIO. UMAN, C.P. 97390, MÉRIDA, YUC.  
TEL.: 999 912 2451

| Code   | Model  | Brand  |
|--------|--------|--------|
| 103164 | COPO-1 | TRUPER |

Warranty. Duration: 1 year. Coverage: parts, components and workmanship against manufacturing or operating defects, except if used under conditions other than normal; when it was not operated in accordance with the instructive; was altered or repaired by personnel not authorized by TRUPER®. To make the warranty valid, present the product, stamped policy or invoice or receipt or voucher, in the establishment where you bought it or in Corregidora 35, Centro, Cuauhtémoc, CDMX, 06060, where you can also purchase parts, components, consumables and accessories. It includes the costs of transportation of the product that derive from its fulfillment of its service network. Phone number 800-018-7873. Made in China. Imported by TRUPER, S.A. de C.V. Parque Industrial 1, Parque Industrial Jilotepec, Jilotepec, Edo. de Méx. C.P. 54257, Phone number 761 782 9100.



Stamp of the business. Delivery date: